



3 year guarantee



CŒUR STEEL

CŒUR STAINLESS

CŒUR HCR

Type A anchor device and rock anchor for protection against falls from height.

Dispositif d'ancrage type A et amarrage pour rocher pour les protections contre les chutes de hauteur.

EN 795: 2012

EN 959: 2007

Ø 10 Ø 12

CŒUR STEEL	✓ (EN 795 only)	✓
CŒUR STAINLESS	✓	✓
CŒUR HCR	-	✓



25 kN

WARNING

Activities involving the use of this equipment are inherently dangerous. You are responsible for your own actions and decisions.

- Before using this equipment, you must:
- Read and understand all Instructions for Use.
 - Get specific training in its proper use.
 - Become acquainted with its capabilities and limitations.
 - Understand and accept the risks involved.



FAILURE TO HEED ANY OF THESE WARNINGS MAY RESULT IN SEVERE INJURY OR DEATH.

Traceability and markings / Traçabilité et marquage



a. Strength	f. Diameter
b. Batch number	g. Single-person use
c. Year of manufacture	h. Standards
d. Quarter	i. Read the instructions for use carefully
e. Material	j. Model identification

PETZL.COM



Latest version



Other languages



Product Experience



PPE checking

Warning symbols
Panneaux d'alertes



PETZL
F-38920 Croles
PETZL.COM
ISO 9001
© Petzl
Made in France



Sustaining our Community
Au service de la Communauté
FONDATION-PETZL.ORG



100%
Recycled paper

1. Field of application (text part) Champ d'application (partie texte)

2. Principal materials (text part) Matériaux principaux (partie texte)

3. Inspection, points to verify Contrôle, points à vérifier



PPE checking

Vérification EPI

PETZL.COM



4. Compatibility Compatibilité

Do not combine dissimilar metals

Ne pas associer des matières différentes



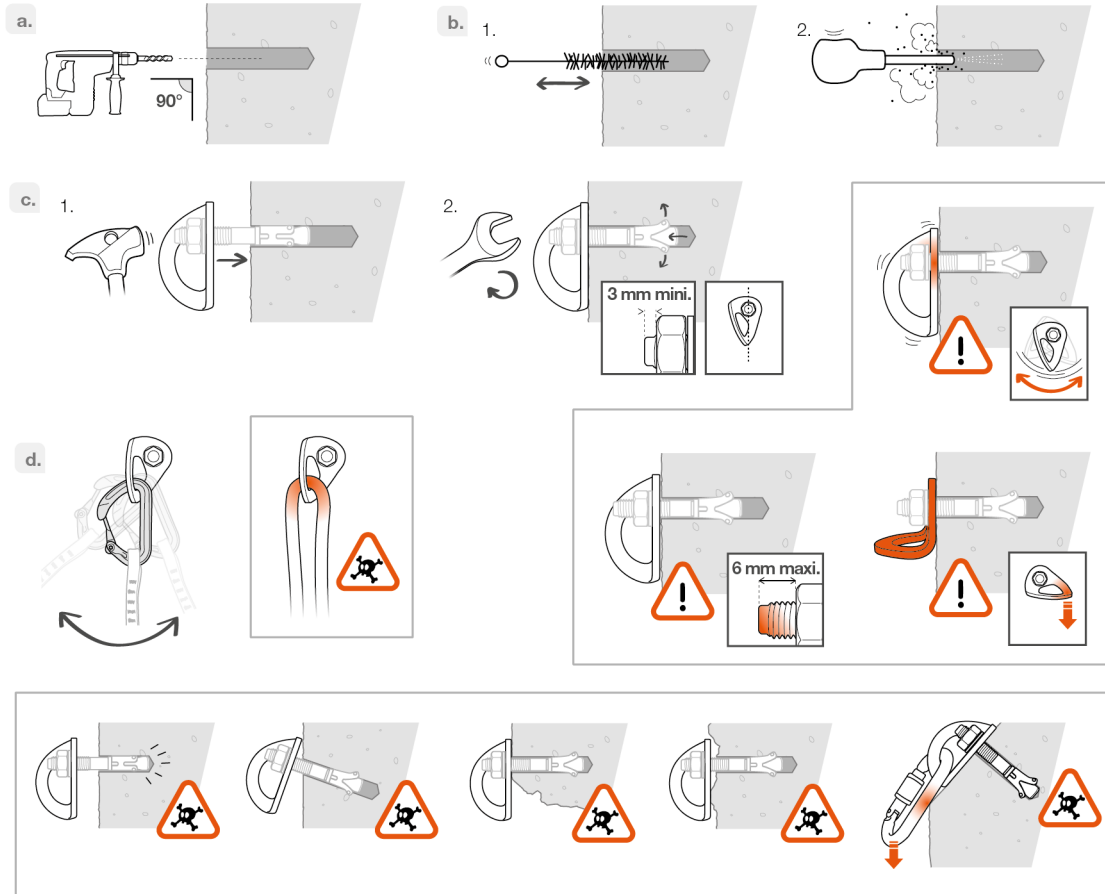
Markings / Marquage

HCR	1.4529	1.4529	HCR	904L
STAINLESS	A4-80	-	A4	316L
STEEL	-	-	-	STEEL

5. Installing the anchor

Installation de l'ancrage

Example of installation with an expansion bolt
Exemple d'installation avec un goujon à expansion.



6. Additional information

Informations complémentaires

A. Lifetime / Durée de vie

unlimited
illimitée

B. Acceptable T° T° tolérées

+ 80°C / + 176°F
- 40°C / - 40°F

C. Precautions for use Précautions d'usage



D. Cleaning / Nettoyage

+ 30°C maxi.
+ 86°F maxi.



E. Drying / Séchage

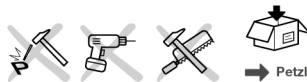
+ 30°C maxi.
+ 86°F maxi.



F. Storage - Transport Stockage - transport



H. Modifications - Repairs Modifications - Réparations



I. FAQ - Contact

Questions - Contact



→ petzl.com

